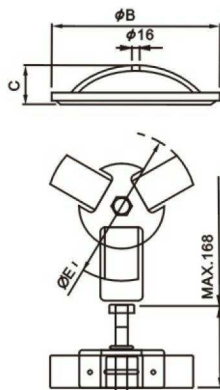
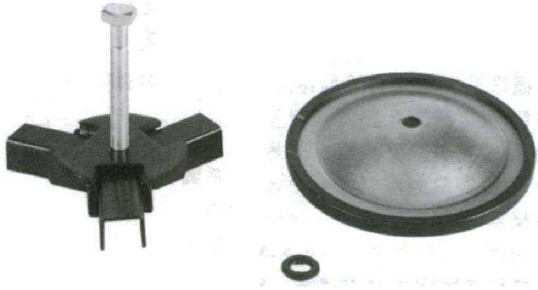


TANK ACCESSORIES

EC Tank Sidecovers



FEATURE:

This sidecover is mounted and fixed on one or both sides of tank, and removable to clean inside of tank. The edge of sidecover is sealed with oil seal which results in high temperature resistance and free leakage.

HOW TO ORDER:

EC	-10
Model	Diameter
Tank Accessories	refer to "Dimensions & Specifications"

DIMENSIONS & SPECIFICATIONS:

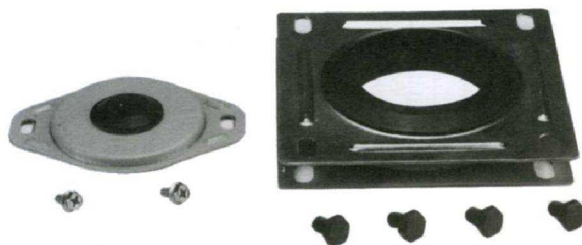
Model No.	A mm	B mm	C mm	Weight (Kgs)
EC-08	210	50	150	2.64
EC-10	260	59	200	3.22
EC-12	315	60	265	4.46
EC-14	360	70	310	5.68
EC-18	475	75	425	9.66

Maximum tightening torque:
 2.7~4.2kg-m/20~30 ft-1b (EC-10/12/14)
 2.7~3.5kg-m/20~25 ft-1b (EC-18)

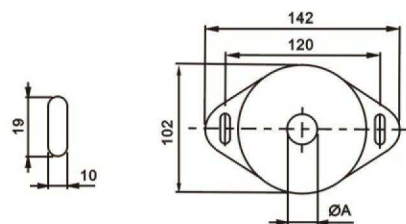
Minimum thickness of tank side plate:
 4mm (EC-08/10/12)
 5mm (EC-14)
 6mm (EC-18)

SUCTION & RETURN FLANGES

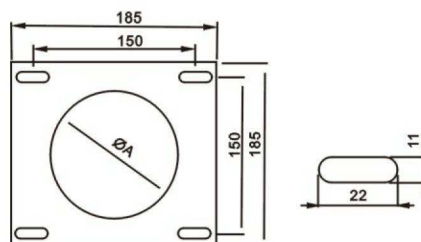
FS、FR Types



FS-** TYPE



FR-** TYPE



FEATURE:

Pipes can be installed through these flanges mounted on tops of tanks. They can be removable to check and clean the strainers or diffusers in tanks.

■ HOW TO ORDER:

FS	O3
Model	Pipe Size
FS : 2-bolt Type FR : 4-bolt Type	03 : 3/8" 08 : 1" 04 : 1/2" 10 : 1 1/4" 06 : 3/4" 12 : 1 1/2"

Remarks: "Max. Cut Hole Dia." Is recommended maximum cut hole diameter of tank for flange mounting and piping.

■ SPECIFICATIONS:

Model	Pipe Size	Weight kg(lb)	Max. Cut Hole Dia. Mm(inch)	Applicable Strainers
FS-03	3/8"	0.15(0.33)	92(3.6)	SFN-02-08 SFW-02-08 MF-02-12
FS-04	1/2"			
FS-06	3/4"			
FS-08	1"			
FS-10	1 1/4"			
FS-12	1 1/2"			
FR-08	1"	0.64(1.41)	175(6.9)	SFN-08-24 SFW-08-24 MF-12-24
FR-10	1 1/4"	0.62(1.37)		
FR-12	1 1/2"	0.62(1.37)		
FR-16	2"	0.60(1.32)		
FR-20	2 1/2"	0.58(1.28)		
FR-24	3"	0.56(1.23)		