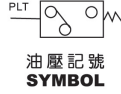




K-1 壓力繼電器

Pressure Switch

JCS



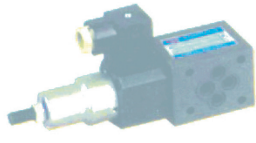
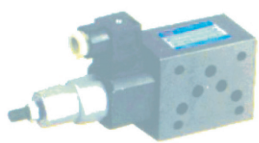
JCD



JPS



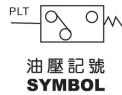
MJCS



K-2 壓力繼電器

Adjustable Pressure Switch

APSA、APSB、APSC、
APSD、APSE、APSF、
APSG、APSH



選購指南 HOW TO ORDER

(M)JCS	-02	P	LL
系列編號 SERIES NUMBER JPS JCS JCD MJCS	通徑 VALVE SIZE 02 03	作動形式 CONTROL TYPE P:P油口, P: PORT A:A油口, A: PORT B:B油口, B: PORT W:AB油口, AB PORT	壓力調整範圍 PRESSURE ADJUSTMENT RANGE 參照性能表 REFER TO SPECIFICATION

性能表 SPECIFICATION

型號 MODEL	最高使用壓力 MAX. OPERATING PRESSURE kgf/cm ²	壓力調整範圍 PRESSURE ADJ. RANGE (kgf/cm ²)	重量 WEIGHT (kg)
JPS-02HM	210	30-210	1.45
JPS-02L	70	25-60	1.45
JPS-02LL		5-60	1.45
JCS-02N	210	30-210	1.0
JCS-02NL	70	25-60	1.0
JCS-02NLL		5-60	1.0
JCD-02S	50	4-26	0.8
MJCS- 02PN 02AN 02BN 02WN	210	30-210	1.8
			2.5
			2.5
MJCS- 02PL 02AL 02BL 02WL	70	25-60	1.8
			2.5
			2.5
MJCS- 02PLL 02ALL 02BLL 02WLL	70	5-60	1.8
			2.5
			2.5
MJCS- 03PN 03AN 03BN 03WN	210	30-210	2.8
			3.5
			3.5
MJCS- 03PL 03AL 03BL 03WL	70	25-60	2.8
			3.5
			3.5
MJCS- 03PLL 03ALL 03BLL 03WLL	70	5-60	2.8
			3.5
			3.5

選購指南 HOW TO ORDER

APSA	230	1
系列編號 SERIES NUMBER 管式安裝 THREAD TYPE: APSA APSB APSC APSD APSE APSE 板式安裝 SUB-PLATE: APSG APSE	壓力調整範圍 PRESSURE ADJUSTMENT RANGE 見性能表 AS SPECIFICATION	閥規格 THREAD TYPE 1:1/4" PT 2:1/4" NPT 3:1/4" SAE 4:1/4" BSP

性能表 SPECIFICATION

型號 MODEL	最高耐用壓力 MAX. PRESSURE bar	壓力調整範圍 PRESSURE ADJ. RANGE bar	安裝形式 MOUNTING TYPE	重量 WEIGHT (kg)
APSA APSB	200	35:5-35	管式安裝 THREAD TYPE 1:1/4" PT 2:1/4" NPT 3:1/4" SAE 4:1/4" BSP	0.8
	200	70:10-70		0.7
	600	150:30-150		
	600	230:50-230 420:90-400		
APSD	200	40:5-40	板式安裝 SUBPLATE	0.5
APSC	200	60:5-60		0.6
APSE	200	125:10-125		0.6
APSF	600	275:25-275 400:300-400		0.6
APSG	200	60:5-60	板式安裝 SUBPLATE	0.6
APSH	600	125:10-125 275:25-275		0.6