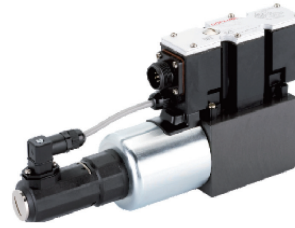




J-8 超高響應比例壓力閥(帶位移控制)

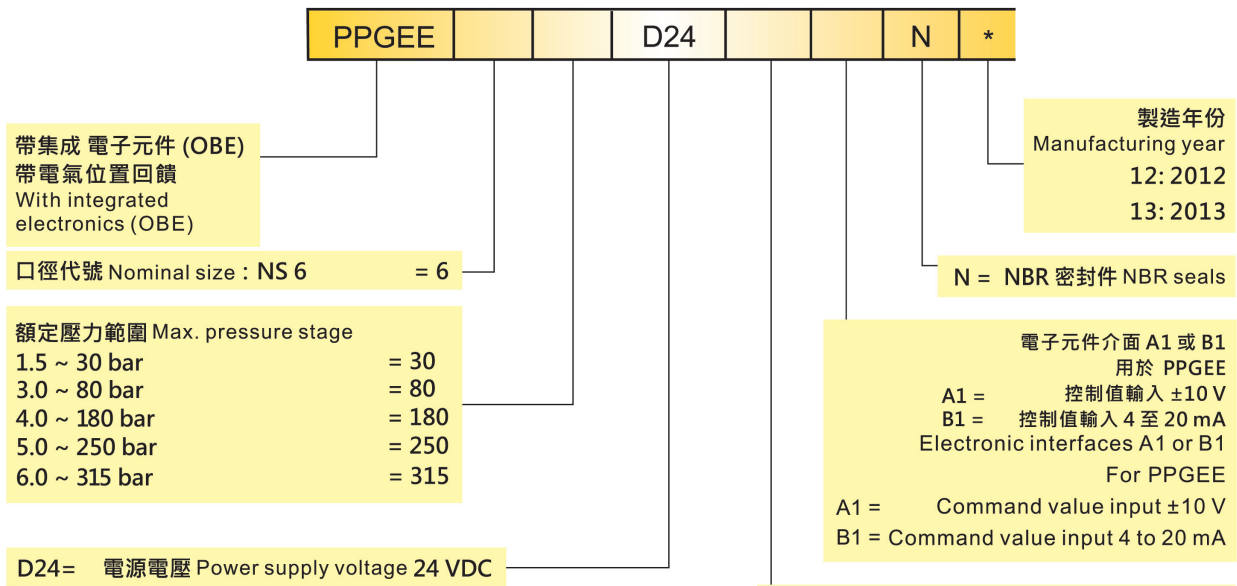
High Response Proportional Pressure Valves(with feedback)

PPGEE-6 系列



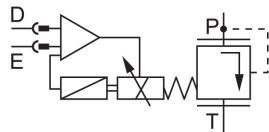
● 訂購代碼：(型號說明)

HOW TO ORDER



Symbols 油壓記號

For on-board electronics



電氣連接
用於 PPGEE :

無代碼= 不帶符合DIN 的元件插頭式 DF31

DF31= 帶插頭式連接器 – 單獨定購

Electrical connections
For PPGEE:

No code = without DIN type DF31

DF31= plug-in connector – separate order

J-9 超高響應比例壓力閥(先導式、帶位移控制)

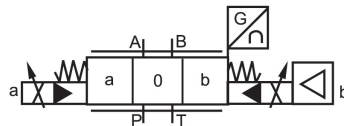
High Response Proportional Direction Valves(with feedback)

DPGKE-10/16/25/27/32/35系列

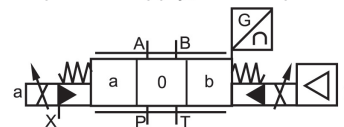


Symbols 油壓記號

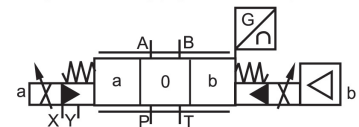
類型 DPGKE...ET.
內部先導供油；內部先導泄油
Type DPGKE...ET.
Internal pilot oil supply, internal pilot oil drain



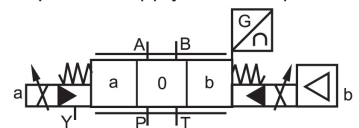
類型 DPGKE...T.
外部先導供油；內部先導泄油
Type DPGKE...T.
External pilot oil supply; internal pilot oil drain



類型 DPGKE...
外部先導供油；外部先導泄油
Type DPGKE...
External pilot oil supply, external pilot oil drain



類型 DPGKE...E.
內部先導供油；外部先導泄油
Type DPGKE...E.
Internal pilot oil supply; external pilot oil drain





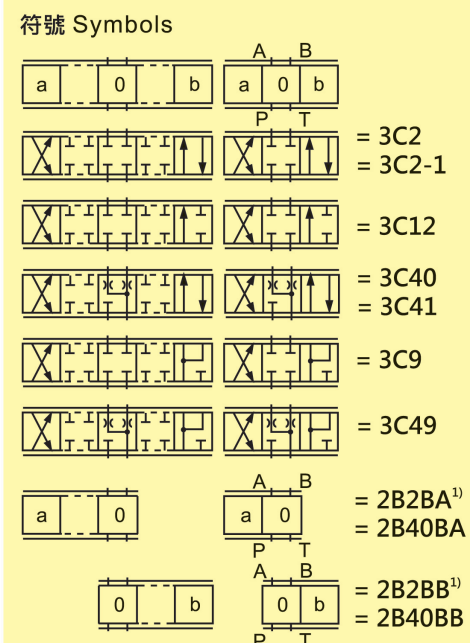
J-9 超高響應比例壓力閥(先導式、帶位移控制)
High Response Proportional Direction Valve (with Feedback)

● 訂購代碼 : (型號說明) HOW TO ORDER



四通設計的電動操作式
2級比例方向閥 ·
帶集成電子元件 (OBE)
帶電氣位置回
Electrically operated 2-
stage proportional
directional valve of 4-way
design with integrated
electronics, with electrical
position feedback

額定規格尺寸 10 =10
額定規格尺寸 16 =16
額定規格尺寸 25 =25
額定規格尺寸 27 =27
額定規格尺寸 32 =32
額定規格尺寸 35 =35
Nominal size



帶符號 With Symbols 3C21 和 3C41:
 P → A : $q_{v\max}$ B → T : $q_v/2$
 P → B : $q_v/2$ A → T : $q_{v\max}$

帶符號 With Symbols 3C9 和 3C49:
 P → A : $q_{v\max}$ B → T : $q_v/2$
 P → B : $q_{v\max}/2$ A → T : $q_{v\max}$

注意:
 對於閥芯 3C40、3C41 和 3C49 · A 與
 T · B 與 T 在零位相連通 · 節流面積為額
 定面積的 2%。
 Note:
 With the spools 3C40, 3C41 and 3C49
 there is a connection from A to T and
 B to T in the zero position with approx.
 2 % of the applicable nominal
 cross-section.

製造年份
Manufacturing year
12: 2012
13: 2013

N = NBR 密封件 NBR seals

D= 帶減壓閥 With pressure
DPR-40 reducing
(固定設置) DPR-40
(fixed setting) (fixed setting)

電子元件介面
A1= 控制值/實際值 ±10 V
B1= 控制值/實際值 4 至 20 mA
C1= 控制值/實際值 ±10 mA
Interfaces
A1 = Com./act. value ±10 V
B1 = Com./act. value 4 to 20 mA
C1 = Com./act. value ±10 mA

電氣連接
無代碼=不帶符合 DIN 的元件插頭插頭式 DF31
DF31= 帶插頭式連接器 – 單獨定購
Electrical connections
without DIN type DF31
DF31= plug-in connector – separate order

先導供油和泄油
無代碼= 外部先導供油 · 外部先導泄油
E= 內部先導供油 · 外部先導泄油
ET= 內部先導供油 · 內部先導泄油
T= 外部先導供油 · 內部先導泄油
Pilot oil supply and drain
No code = External pilot oil supply, external pilot oil drain
E = Internal pilot oil supply, external pilot oil drain
ET = Internal pilot oil supply, internal pilot oil drain
T = External pilot oil supply, internal pilot oil drain

D24= 電源電壓 Power Supply voltage 24 VDC

6E= 帶可拆卸線圈的的比例線圈
Proportional solenoid with removable coil

特性曲線形式 Characteristic curve form
L= 線性 Linear
P= 帶精確控制的線性特性 Linear with fine control range

25=²⁾ or 或 50=³⁾ or 或 100= 用於額定規格尺寸 10
 125=³⁾ or 或 200= 用於額定規格尺寸 16
 220=³⁾ or 或 350= 用於額定規格尺寸 25
 500= 用於額定規格尺寸 27
 400= or 或 600= 用於額定規格尺寸 32
 1000= 用於額定規格尺寸 35
 For nominal size

¹⁾ 示例: 切換位置 "a" 的閥芯 (P→B) 詳細訂貨資訊..2B2BA 或 2B40BA
 切換位置 "b" 的閥芯 (P→A) 詳細訂貨資訊..2B2BB 或 2B40BB

²⁾ 3C2 和 3C40 僅可用於特性曲線形式 L (線性)

³⁾ 3C2-1 和 3C40-1 僅可用於特性曲線形式 L (線性)

¹⁾ Examples: Spool in switched position „a“ (P → B) ordering detail ..2B2BA.. or 2B40BA
 Spool in switched position „b“ (P → A) ordering detail ..2B2BB.. or 2B40BB

²⁾ 3C2 and 3C40 only available with characteristic curve form L (linear)

³⁾ 3C21 and 3C41 only available with characteristic curve form L (linear)