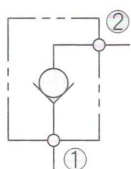


## 螺紋式插裝單向閥-提動式 Screw-in check cartridge valve-Poppet type



油壓符號 Symbol



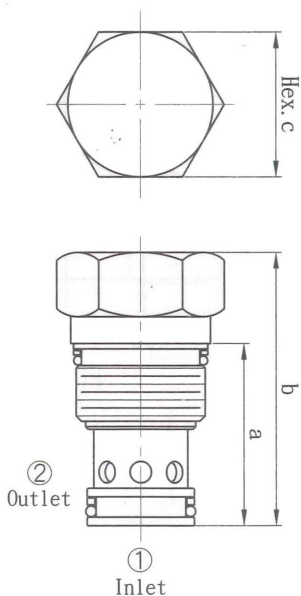
### ■ 特性/Characteristic:

- 單向閥允許自由流在一個方向和在另一個方向鎖固流量
- 低內泄漏量小於1滴/分鐘
- 破裂壓力0.2-7bar
- Check valve allow free flow in one direction and blocked flow in the other direction
- Low leakage of less than 1 drop/min
- Extensive range of cracking pressures available from 0.2 to 7 bar

### ■ 性能表/Specification:

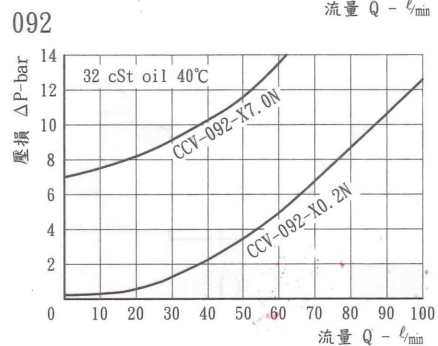
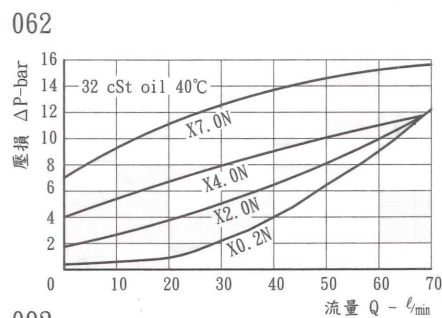
型號 Model	閥系說明 Description	額定流量 Rated Flow	最高壓力 Max. pressure	重量 Weight
CCV-062	提動式，自動流 由閥口①至閥口② Poppet type, free flow from port 1 to port 2	請參閱 壓損曲綫表	315bar (最大值)	063:0.06Kg 093:0.14Kg

### ■ 尺寸圖/Dimensions (mm)



閥型	062	092
a	30	34
b	45	51
c	22	27

### ■ 壓損曲綫/Flow-Pres. Drop Curve

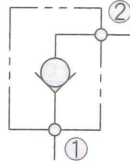


# 螺紋式插裝單向閥-提動式

## Screw-in check cartridge valve-Poppet type



油壓符號 Symbol



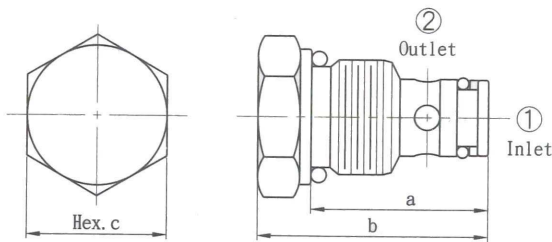
### ■ 特性/Characteristic:

- 單向閥允許自由流在一個方向和在另一個方向鎖固流量
- 低內泄漏量小於1滴/分鐘
- 破裂壓力0.2-7bar
- Check valve allow free flow in one direction and blocked flow in the other direction
- Low leakage of less than 1 drop/min
- Extensive range of cracking pressures available from 0.2 to 7 bar

### ■ 選購指南/How to order:

CCV	082	X	0.2	N
系列編號: 單向閥 Series No. Check Valves.	閥孔型號 Cavity Size C082 C102 C122 C162	調整方式 Controls. X - 不可調整 Non-adjustable.	單向閥開閥壓 Cracking pressure. 0.2 - 0.2 bar 2.0 - 1.8bar 4.0 - 3.5 bar 7.0 - 7.0 bar	油封材質 Seals: N - 丁腈橡膠 Buna N. V - 氟橡膠 Viton.

### ■ 尺寸圖/Dimensions (mm)

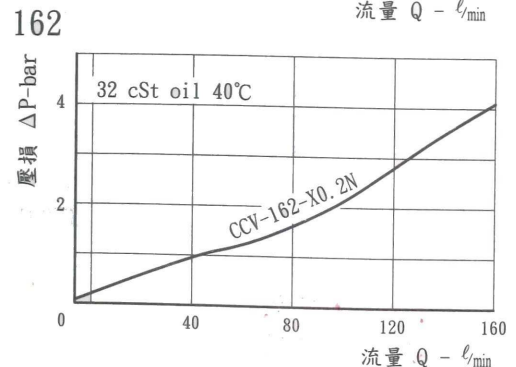
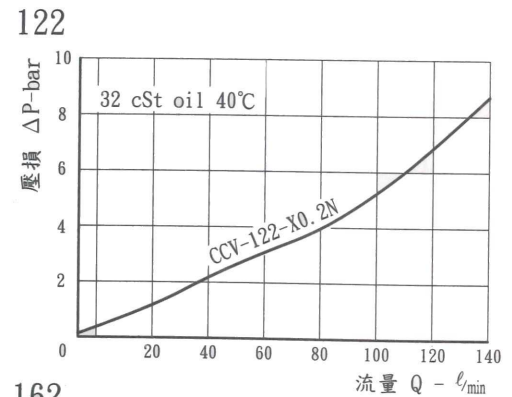
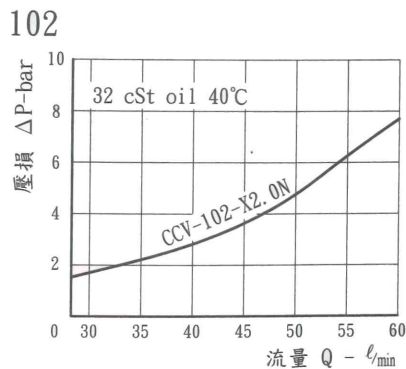
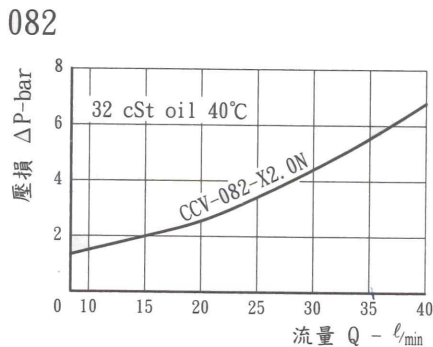


### ■ 性能表/Specification:

型號 Model	閥系說明 Description	額定流量 Rated Flow	最高壓力 Max. pressure	重量 Weight
CCV-082	提動式, 自動流 由閥口①至閥口② Poppet type, free flow from port 1 to port 2	請參閱 壓損曲綫表	250bar (最大值)	082:0.06Kg 102:0.08Kg 122:0.16Kg 162:0.25Kg

閥型	082	102	122	162
a	28	31.7	46	44
b	36.5	39.7	55	56
c	22.2	25.4	31.8	38.1

### ■ 壓損曲綫/Flow-Pres. Drop Curve

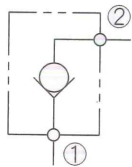


## 螺紋式插裝單向閥-提動式

### Screw-in check cartridge valve-Poppet type



油壓符號 Symbol



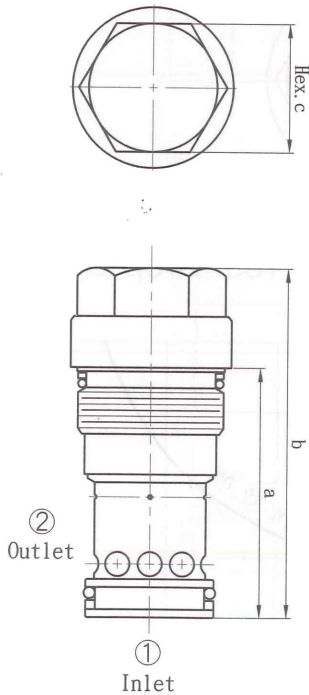
#### ■ 特性/Characteristic:

- 單向閥允許自由流在一個方向和在另一個方向鎖固流量
- 低內泄漏量小於1滴/分鐘
- 破裂壓力0.2-7bar
- Check valve allow free flow in one direction and blocked flow in the other direction
- Low leakage of less than 1 drop/min
- Extensive range of cracking pressures available from 0.2 to 7 bar

#### ■ 性能表/Specification:

型號 Model	閥系說明 Description	額定流量 Rated Flow	最高壓力 Max. pressure	重量 Weight
CCV-T16	提動式，自動流 由閥口①至閥口② Poppet type, free flow from port 1 to port 2	請參閱 壓損曲綫表	315bar (最大值)	T16:0.45Kg T18:0.98Kg

#### ■ 尺寸圖/Dimensions (mm)



閥型	T16	T18
a	62	80
b	87	110
c	32	41

#### ■ 壓損曲綫/Flow-Pres. Drop Curve

