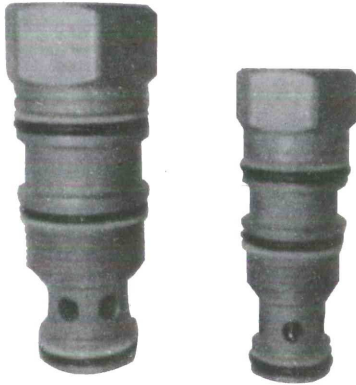
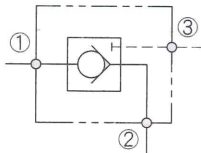


螺紋式插裝導開閥-導壓、提動式

Screw-in pilot to open cartridge check valve-Pilot ratio、Poppet type



油壓符號 Symbol



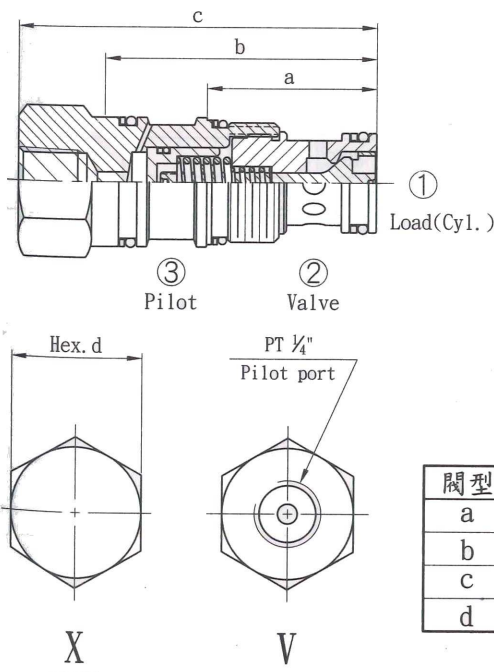
■ 特性/Characteristic:

- 液控單向閥是非調節的開關閥僅使用負荷鎖固，因此不提供流暢的運動控制
- 允許經一單向閥自由流通由2口到1口，反流封閉直到一正比于負荷壓力在3口打開才由1口流到2口
- Pilot to open check valves are non modulating on/off valves used for load locking only and do not provide smooth motion control
- They allow free flow from port 2 to port 1 then block reverse flow until a pilot pressure directly proportional to the load pressure is sensed at port 3 enabling a pilot piston to push the poppet off its seat

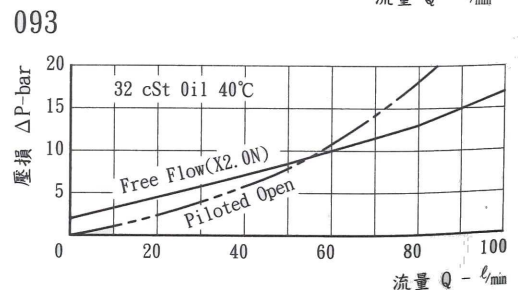
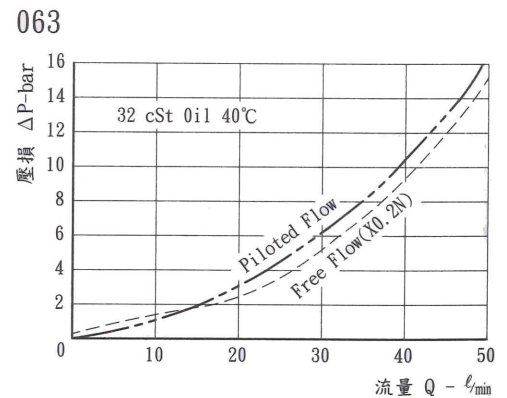
■ 性能表/Specification:

型號 Model	閥系說明 Description	額定流量 Rated Flow	最高壓力 Max. pressure	重量 Weight
CPF-063	提動式 Poppet type 4.5:1導壓比 4.5:1 pilot ratio	請參閱 壓損曲綫表	315bar (最大值)	063:V:0.12Kg X:0.12Kg 093:V:0.22Kg X:0.22Kg

■ 尺寸圖/Dimensions (mm)



■ 壓損曲綫/Flow-Pres. Drop Curve

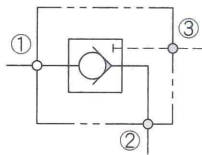


螺紋式插裝導開閥-導壓、提動式

Screw-in pilot to open cartridge check valve-Pilot ratio、Poppet type



油壓符號 Symbol



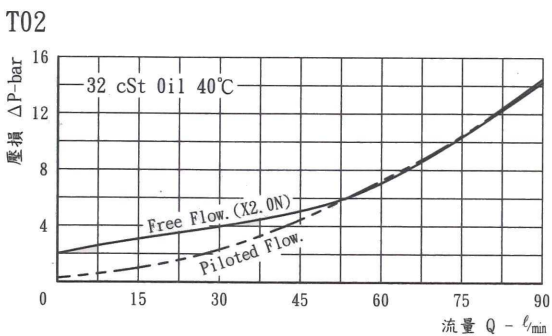
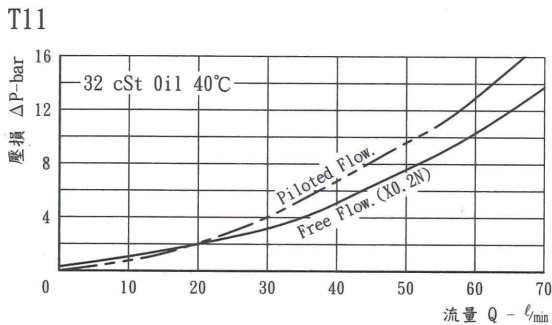
■ 特性/Characteristic:

- 液控單向閥是非調節的開關閥僅使用負荷鎖固，因此不提供流暢的運動控制
- 允許經一單向閥自由流通由2口到1口，反流封閉直到一正比于負荷壓力在3口打開才由1口流到2口
- Pilot to open check valves are non modulating on/off valves used for load locking only and do not provide smooth motion control
- They allow free flow from port 2 to port 1 then block reverse flow until a pilot pressure directly proportional to the load pressure is sensed at port 3 enabling a pilot piston to push the poppet off its seat

■ 性能表/Specification:

型號 Model	閥系說明 Description	額定流量 Rated Flow	最高壓力 Max. pressure	重量 Weight
CPF-T11	提動式 Poppet type 4.5:1導壓比 4.5:1 pilot ratio	請參閱 壓損曲綫表	315bar (最大值)	T11:X:0.13Kg T02:X:0.24Kg T17:X:0.52Kg

■ 壓損曲綫/Flow-Pres. Drop Curve



■ 尺寸圖/Dimensions (mm)

