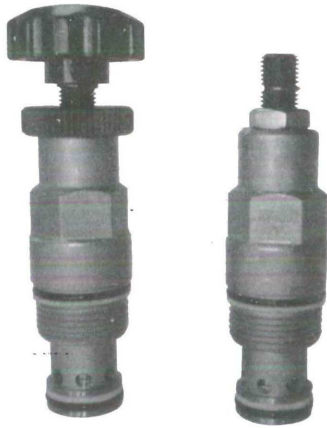
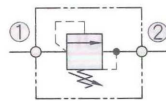


螺紋式插裝溢流閥-直動式、提動式

Screw-in Relief Cartridge Valve - Direct acting, Poppet type



油壓符號 Symbol



閥孔型號 Valve Cavity : C082
 成型刀具 Cavity Tools : CT28-D, CT28-R
 請參閱 Reference P91

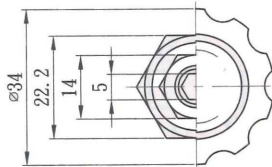
■ 特性/Characteristic:

- 快速反應，響應時間2ms，低洩漏量（小于5滴/分鐘）
- 油口2（油箱）的壓力直接加于閥的設定壓
- Fast acting 2ms response time Low leakage (less than 5 drops/min) at reset
- Pressure at port 2 is directly additive to valve setting

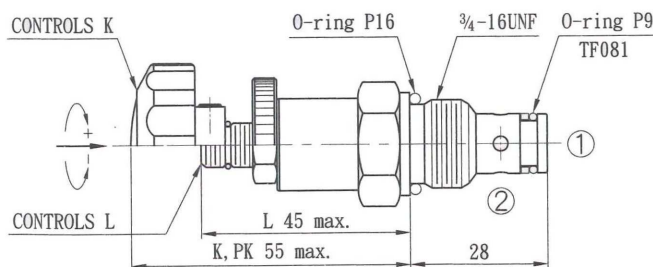
■ 性能表/Specification:

型號 Model	閥系說明 Description	額定流量 Rated Flow	最高壓力 Max. pressure	重量 Weight
CMR-082	提動式 Poppet 直動式 Direct acting	20 l/min	315bar	K: 0.13Kg L: 0.10Kg

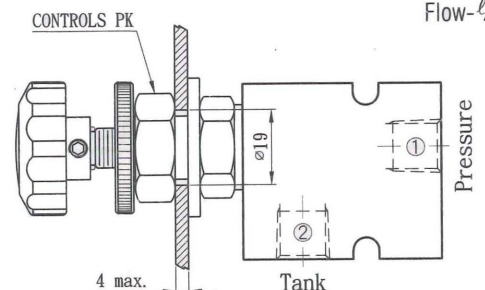
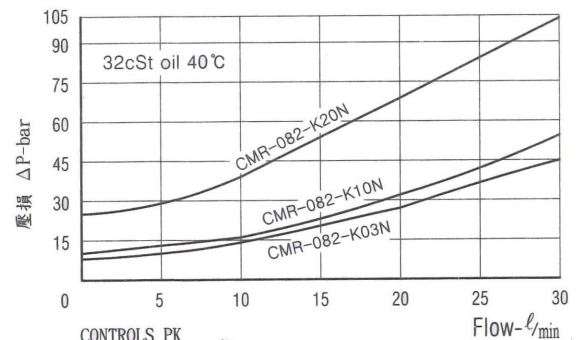
■ 尺寸圖/Dimensions (mm)



- 正轉螺桿，增加設定壓力
Turn screw clockwise to increase the pressure setting.



■ 壓損曲綫/Flow-Pres. Drop Curve



螺紋式插裝溢流閥-直動式、面差式

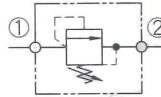
Screw-in Relief Cartridge Valve - Direct acting, Differential area type



■ 特性/Characteristic:

- 快速反應，響應時間2ms，低泄漏量（小于5滴/分鐘）
- 油口2（油箱）的壓力直接加于閥的設定壓
- Fast acting 2ms response time Low leakage (less than 5 drops/min) at reset
- Pressure at port 2 is directly additive to valve setting

油壓符號 Symbol

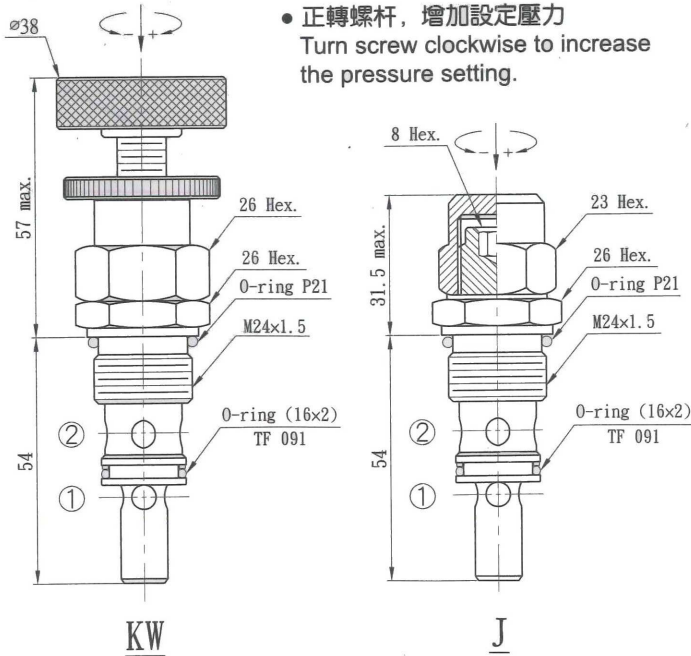


■ 性能表/Specification:

型號 Model	閥系說明 Description	額定流量 Rated Flow	最高壓力 Max. pressure	重量 Weight
CMR-092	直動式 Direct acting 面差式 Differential area.	50 l/min	400bar	J: 0.16Kg KW: 0.31Kg

閥孔型號 Valve Cavity : C092
 成型刀具 Cavity Tools : CT29-D. CT29-R
 請參閱 Reference P99

■ 尺寸圖/Dimensions (mm)



■ 壓損曲綫/Flow-Pres. Drop Curve

