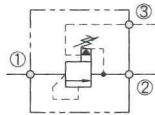


螺紋式插裝溢流閥-引導、透氣型

Screw-in relief cartridge valve-Pilot operated、Vented type



油壓符號 Symbol



■ 特性/Characteristic:

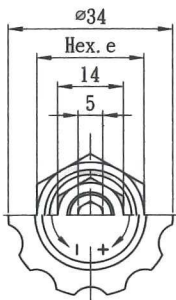
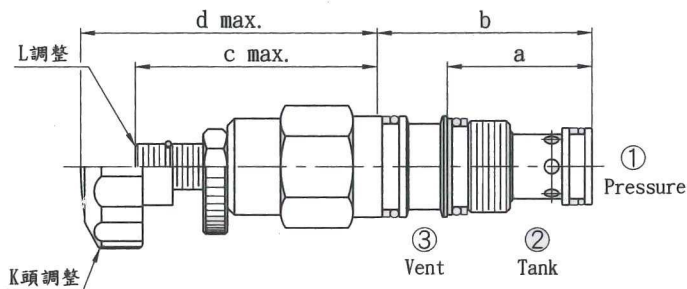
- 溢流閥的設定壓必須高于引導閥
- 快速反應，響應時間10ms
- 在主階和引導部分之間的3號口用于遙控或卸載
- The relief valve setting must always be set higher than the pilot valve
- Fast acting 10ms response time
- Third port between main stage and pilot element used for remote control or unloading

■ 性能表/Specification:

型號 Model	閥系說明 Description	額定流量 Rated Flow	最高壓力 Max. pressure	重量 Weight
CVR-063	透氣型 Vented type 引導型 Pilot operated	請參閱 壓損曲線表	315bar	063:K: 0.17Kg L: 0.14Kg 093:K: 0.29Kg L: 0.25Kg

CVR-063 CVR-093

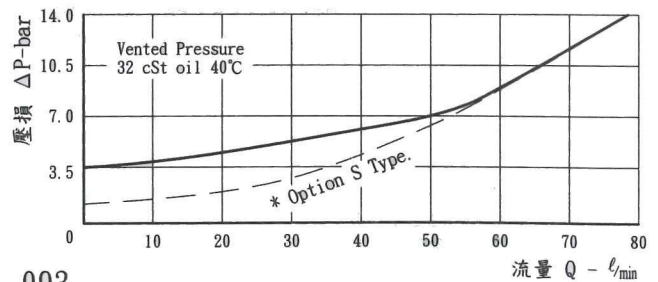
■ 尺寸圖/Dimensions (mm)



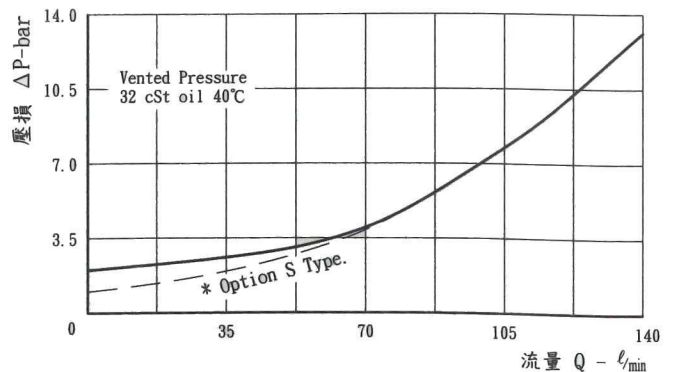
閥型	063	093
a	30	34
b	46	54
c	50	52
d	61	63
e	22	27

■ 壓損曲線/Flow-Pres. Drop Curve

063



093

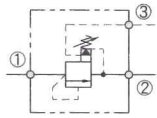


螺紋式插裝溢流閥-引導、透氣型

Screw-in relief cartridge valve-Pilot operated、Vented type



油壓符號 Symbol



■ 特性/Characteristic:

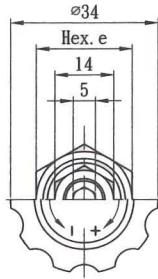
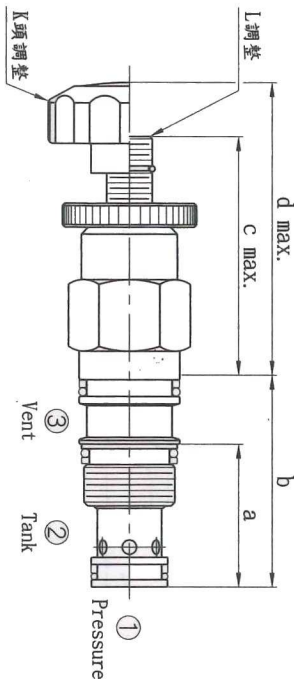
- 溢流閥的設定壓必須高于引導閥
- 快速反應，響應時間10ms
- 在主階和引導部分之間的3號口用于遙控或卸載
- The relief valve setting must always be set higher than the pilot valve
- Fast acting 10ms response time
- Third port between main stage and pilot element used for remote control or unloading

■ 性能表/Specification:

型號 Model	閥系說明 Description	額定流量 Rated Flow	最高壓力 Max. pressure	重量 Weight
CVR-T02	透氣型 Vented type 引導型 Pilot operated	請參閱 壓損曲綫表	315bar	T11:K: 0.19Kg L: 0.15Kg T02:K: 0.29Kg L: 0.25Kg T17:K: 0.66Kg L: 0.62Kg

CVR-T02
CVR-T11
CVR-T17

■ 尺寸圖/Dimensions (mm)



閥型	T11	T02	T17
a	35	35	46
b	52	54	69
c	49	60	66
d	60	72	77
e	22.2	28.5	32

■ 壓損曲綫/Flow-Pres. Drop Curve

