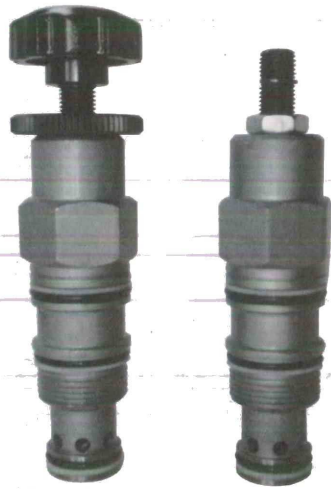
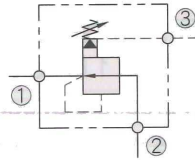


螺紋式插裝減壓閥-引導、平衡滑柱型

Screw-in reducing cartridge valve-Pilot operated、Balanced spool type



油壓符號 Symbol



■ 特性/Characteristic:

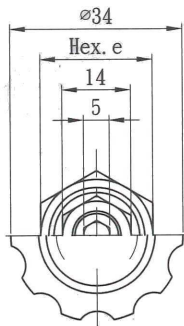
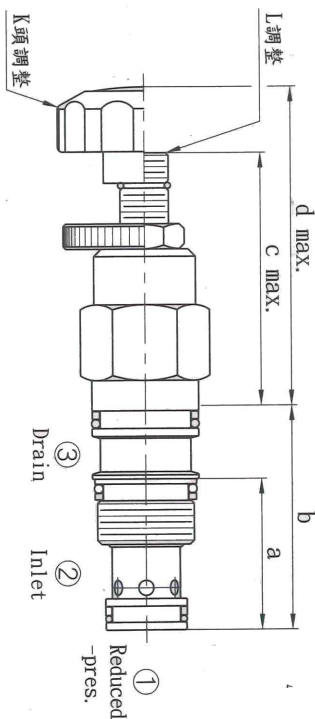
- 三口引導操作減壓插式閥一般使用目的是控制主系統下的二次壓
- 遲滯小於 ±1%
- The three port pilot operated reducing are general used to control the pressure of system pre.
- Hysteresis is less than ±1%

■ 性能表/Specification:

型號 Model	閥系說明 Description	額定流量 Rated Flow	最高壓力 Max. pressure	重量 Weight
CRD-063	引導型 Pilot operated 平衡滑柱 Balanced spool	請參閱 壓損曲綫表	315bar	063:K: 0.17Kg L: 0.14Kg 093:K: 0.29Kg L: 0.25Kg

CRD-063  
CRD-093

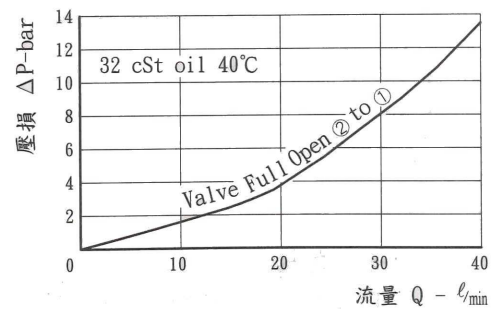
■ 尺寸圖/Dimensions (mm)



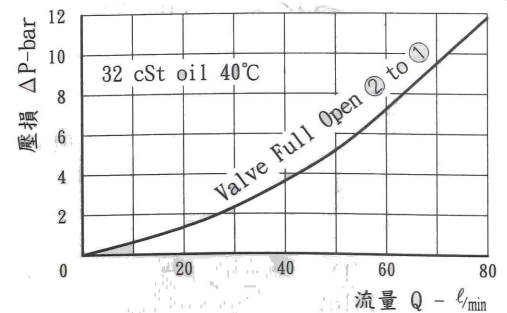
閥型	063	093
a	30	34
b	46	54
c	50	52
d	61	63
e	22	27

■ 壓損曲綫/Flow-Pres. Drop Curve

063

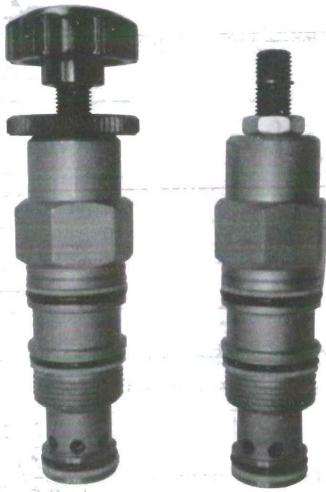


093

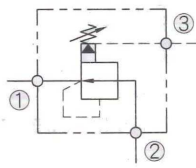


螺紋式插裝減壓閥-引導、平衡滑柱型

Screw-in reducing cartridge valve-Pilot operated、Balanced spool type



油壓符號 Symbol



■ 特性/Characteristic:

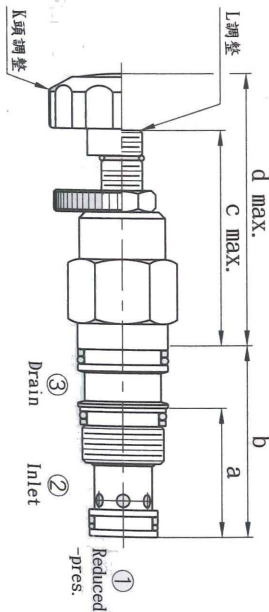
- 三口引導操作減壓插式閥一般使用目的是控制主系統下的二次壓
- 遲滯小於 ±1%
- The three port pilot operated reducing are general used to control the pressure of system pre.
- Hysteresis is less than ±1%

■ 性能表/Specification:

型號 Model	閥系說明 Description	額定流量 Rated Flow	最高壓力 Max. pressure	重量 Weight
CRD-T11	引導型 Pilot operated 平衡滑柱 Balanced spool	請參閱 壓損曲線表	315bar	T11:K: 0.19Kg L: 0.15Kg T02:K: 0.29Kg L: 0.25Kg T02:K: 0.66Kg L: 0.62Kg

CRD-T02  
CRD-T11  
CRD-T17

■ 尺寸圖/Dimensions (mm)



閥型	T11	T02	T17
a	35	35	46
b	52	54	69
c	101	114	66
d	112	126	77
e	22.2	28.5	32

■ 壓損曲線/Flow-Pres. Drop Curve

