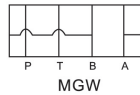
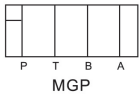




G-17 壓力表油路塊

Pressure Gauge Circuit Block

MG※-02系列



油壓記號
SYMBOL

選購指南 HOW TO ORDER

MG	P	-02
系列號碼 SERIES NUMBER	控制油路 CONTROL PORT	規格 SPECIFICATIONS
壓力計油路塊 PRESSURE GAUGE CIRCUIT BLOCK MG	P: P孔 P PORT T: T孔 T PORT W: A.B孔 A.B PORT	02: 1/4"

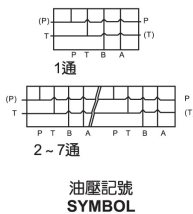
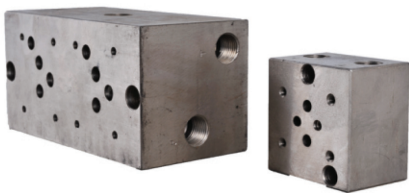
性能表 SPECIFICATION

型號 MODEL	最高使用壓力 MPa MAX. OPERATING PRESSURE	最大流量 ℓ/min MAXIMUM FLOW	油口尺寸 OIL & INLET SIZE	重量Kg WEIGHT(KG)
MGP-02	31.5	35	PT 1/4"	1
MGT-02				
MGW-02				

G-18 標準油路塊

Modular Base Plates

MMC-02, 03, 04, 06系列, 油路塊系列



選購指南 HOW TO ORDER

MMC	-02	-B	-2
系列號碼 SERIES NUMBER MMC	通徑 VALVE SIZE 02 03 04 06	出入口位置 INLET & OUTLET POSITION -: 標準型 STANDAND B 孔在上 B PORT UP A 孔在上 A PORT UP	通數 NUMBER OF STATIONS 02: 1-7通 02: 1-7 STATIONS 03: 1-6通 03: 1-6 STATIONS

性能表 SPECIFICATION

型號 MODEL	額定壓力 RATED PRESSURE (kgf/cm ²)	額定流量 RATED FLOW (ℓ/min)	通數 NUMBER OF STATIONS
MMC-02	250	02:35	02:1~7
MMC-03		03:80	03:1~6
MMC-04		04:160	04:1~5
MMC-06		06:190	06:1~4
MMC-※	非標準案設計 Non-Standard as customer's need		