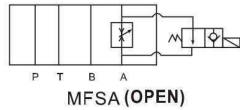
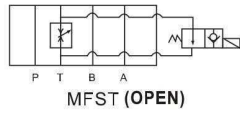
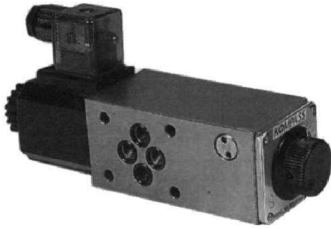


### SOLENOID THROTTLE WITH CHECK VALVES (PRESSURE COMPENSATED)

#### MFS※-02、03 SERIES

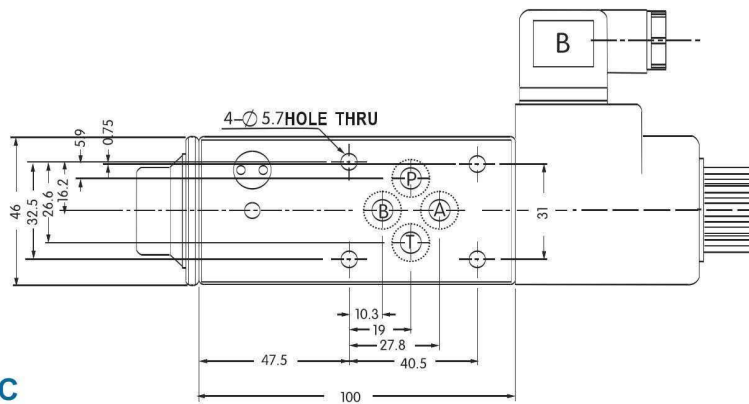
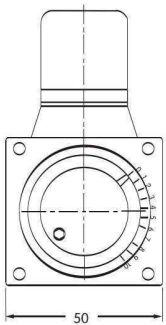


#### FEATURE:

Working speed of machine is controlled and switched by throttle with check valve, whose flow directions are switched by integrated solenoid directional control valves.

#### Dimensions

##### MFST-02-AC/DC



##### MFST-03-AC/DC

