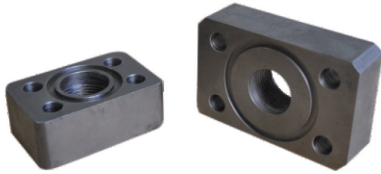




A-10 F3系列法蘭組

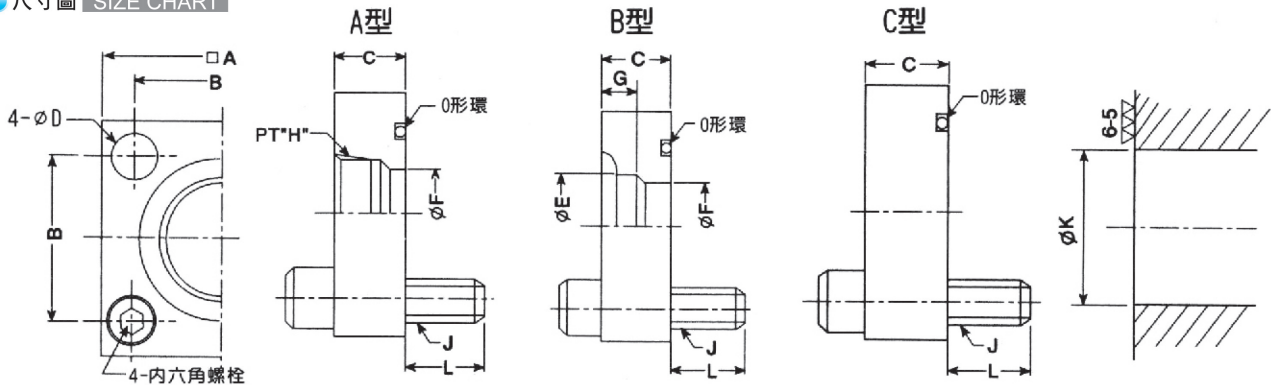
F3 Series Flanges

選購指南 HOW TO ORDER



F3	-10	-W	A	-
系列號碼 SERIES NUMBER	口徑代號 DIAMETER SYMBOL	接管尺寸 PIPE SIZE	接管形式 TAKE FORM	法蘭出入口 FLANGE IMPORT AND EXPORT
方形的法蘭 THE SQUARE FLANGE	03:3/8 04:1/2 06:3/4 08:1 10:1 1/4 12:1 1/2 16:2 20:2 1/2 24:3	W: 小尺寸 無記號: 大尺寸 W: SMALL SIZE NO MARK: LARGE SIZE	A=螺紋連 接型 B=插焊型 C=盲孔 (蓋板) A = SCREW THREAD. CONNECTION TYPE B = PLUG WELDING TYPE C = BLIND HOLE	無記號: 標準90° 法蘭 WITHOUT A MARK: STANDARD 90 DEGREE FLANGE

尺寸圖 SIZE CHART



性能表 SPECIFICATION

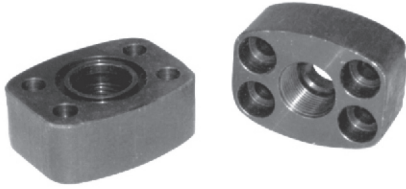
型號 MODEL	口徑PT CALIBER	尺寸mm SIZE											O形環 O RING	內六角螺絲 SIX ANGLE SCREWS	工作壓力MPa WORKING PRESSURE MPa
		A	B	C	D	E	F	G	H	J	K	L			
F3-03-WA	3/8	54	36	21	11	---	14	---	3/8	M10	15	14	G25	M10×35	25
F3-03-WB						17.8	12.5	9	---						
F3-03-A						---	17.5	---	1/2						
F3-03-B	1/2	58	40	21	11	---	17.5	---	1/2	M10	20	14	G30	M10×35	25
F3-06-WA	22.2					16	11	---							
F3-06-WB	---					17.5	---	1/2							
F3-06-A	3/4	68	48	27	13.5	---	23	---	3/4	M12	25	18	G35	M12×45	25
F3-06-B	27.2					20	12	---							
F3-08-WA	---					23	---	3/4							
F3-08-WB	3/4	76	56	27	13.5	27.2	20	12	---	M12	31.5	18	G40	M12×45	25
F3-10-WA	---					29	---	1							
F3-10-B	11/4					---	31.5	16	---						
F3-10-A	1	92	65	35	18	---	31.5	---	11/4	M16	37.5	25	G50	M16×60	25
F3-12-WA	43.2					31.5	16	---							
F3-12-WB	---					43.5	---	11/2							
F3-12-A	11/2	100	73	35	18	49.1	37.5	18	---	M16	50	25	G60	M16×60	25
F3-12-B	---					43.5	---	11/2							
F3-16-WA	---					47.5	20	---							
F3-16-WB	11/2	128	92	44	22	---	47.5	---	2	M20	60	30	G75	M20×75	25
F3-16-A	2					---	47.5	---	2						
F3-16-B	---					61.1	47.5	20	---						
F3-20-WA	2	140	103	44	24	---	47.5	---	2	M22	75	36	G85	M22×80	25
F3-20-WB	---					61.1	47.5	20	---						
F3-20-A	21/2					---	70	---	21/2						
F3-20-B	---	77.1	60	22	---	M22	75	31	36						
F3-24-WA	---	70	---	21/2											
F3-24-WB	21/2	---	77.1	60	22					---					
F3-24-A	3	140	103	49	24	---	71	---	3	M22	75	31	G85	M22×80	25
F3-24-B	---					90	71	25	---						



A-10 F5系列法蘭組

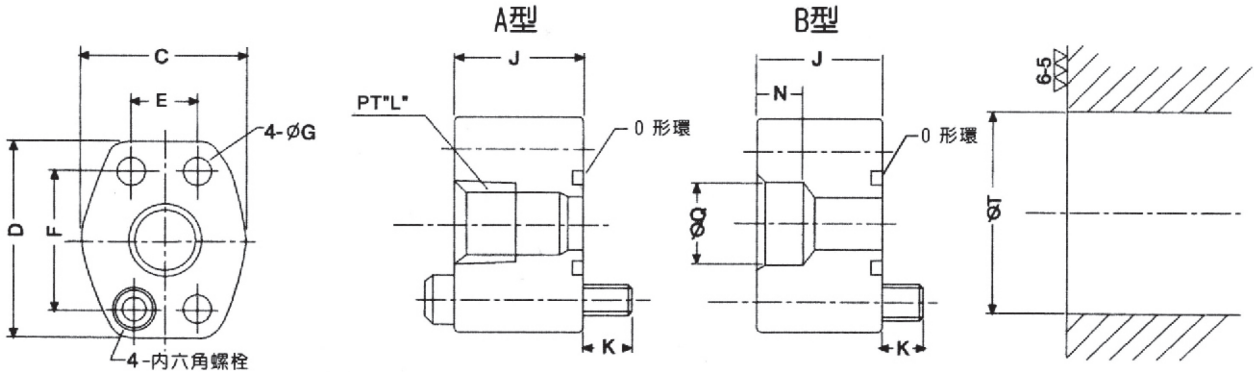
F5 Series Flanges

選購指南 HOW TO ORDER



F5	-10	-W	A	-
系列號碼 SERIES NUMBER	口徑代號 DIAMETER SYMBOL	接管尺寸 PIPE SIZE	接管形式 TAKE FORM	法蘭出入口 FLANGE IMPORT AND EXPORT
橢圓形法蘭 OVAL FLANGE	04:1/2 06:3/4 08:1 10:1 1/4 12:1 1/2 16:2 20:2 1/2 24:3 28:3 1/2 32:4	W: 小尺寸 無記號: 大尺寸 W: SMALL SIZE NO MARK: LARGE SIZE	A=螺紋連 接管 B=插焊型 C=盲孔 (蓋板) A = SCREW THREAD CONNECTION TYPE B = PLUG WELDING TYPE C = BLIND HOLE	無記號: 標準90° 法蘭 WITHOUT A MARK: STANDARD 90 DEGREE FLANGE

尺寸圖 SIZE CHART



性能表 SPECIFICATION

型號 MODEL	口徑PT CALIBER	尺寸mm Size										O形圈 O RING	內六角螺絲 SIX ANGLE SCREWS	工作壓力MPa WORKING PRESSURE MPa	
		C	D	E	F	G	J	K	L	N	Q				T
F5-04-WA	3/8	40	54	17.5	38.1	8.8	30	10	3/8	---	---	13	P22	M8×40	25
F5-04-WB									---	9	17.8				
F5-04-A									1/2	---	---				
F5-04-B	1/2	48	65	22.2	47.6	11	30	15	1/2	---	---	19	G30	M10×45	25
F5-06-WA									---	11	22.2				
F5-06-WB									---	12	27.7				
F5-06-A	3/4	55	70	26.2	52.4	11	30	15	3/4	---	---	26	G35	M10×45	25
F5-06-B									---	12	27.7				
F5-08-WA									---	12	27.7				
F5-08-WB	1	64	80	30.2	58.7	11	30	17	3/4	---	---	32	G40	M10×50	25
F5-08-A									---	14	34.5				
F5-08-B									---	14	34.5				
F5-10-WA	1 1/4	72	94	35.7	69.9	13.5	30	17	1	---	---	38	G50	M12×50	25
F5-10-WB									---	14	34.5				
F5-10-A									---	16	43.2				
F5-10-B	1 1/2	85	102	42.9	77.8	13.5	30	17	1 1/4	---	---	48	G60	M12×50	25
F5-12-WA									---	16	43.2				
F5-12-WB									---	16	43.2				
F5-12-A	2	102	114	50.8	88.9	13.5	40	17	1 1/2	---	---	51	G65	M12×50	17.5
F5-12-B									---	18	49.1				
F5-16-WA									---	18	49.1				
F5-16-WB	2 1/2	116	135	61.9	106.4	17.5	50	17	2	---	---	63	G75	M12×60	17.5
F5-16-A									---	20	61.1				
F5-16-B									---	20	61.1				
F5-20-WA	3	134	153	69.9	120.7	17.5	38	17	2	---	---	76	G85	M16×70	17.5
F5-20-WB									---	20	61.1				
F5-20-A									---	22	77.1				
F5-20-B	3 1/2	150	162	77.8	130.2	17.5	50	17	2 1/2	---	---	88	G100	M16×55	17.5
F5-24-WA									---	22	77.1				
F5-24-WB									---	22	77.1				
F5-24-A	4	162	177.8	146.4	156.4	17.5	38	17	3	---	---	101	G115	M16×70	17.5
F5-24-B									---	25	90				
F5-28-WA									---	25	90				
F5-28-WB	4	177.8	194.4	88.9	177.8	17.5	50	17	3 1/2	---	---	88	G100	M16×55	17.5
F5-28-A									---	28	102.8				
F5-28-B									---	28	102.8				
F5-32-WA	4	194.4	211.4	106.4	194.4	17.5	38	17	4	---	---	101	G115	M16×70	17.5
F5-32-WB									---	13.5	115.5				
F5-32-A									---	13.5	115.5				
F5-32-B															