

STANDARD FLANGES

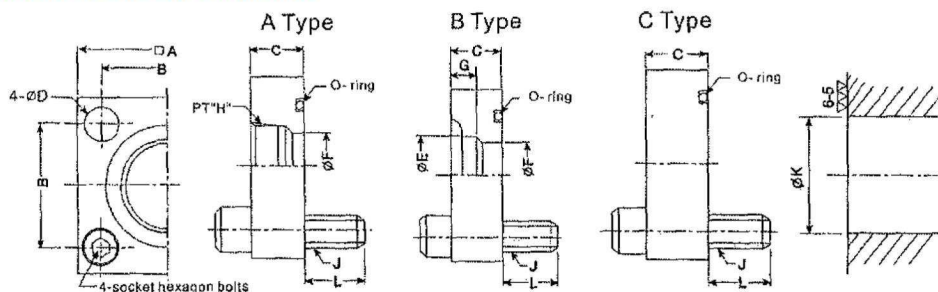
F3 SERIES FLANGES



FEATURE:

Forged steel material can resist high pressure up to 315kgf/cm²(4500psi).

DIMENSIONS & SPECIFICATIONS:



MODEL	Porsize PT	Dimensions (mm)											O-Ring	Proper bolts	Working pressure MPa
		A	B	C	D	E	F	G	H	J	K	L			
F3-03-WA	3/8	54	36	21	11	---	14	---	3/8	M10	15	14	G25	M10 X 35	25
F3-03-WB						17.8	12.5	9	---						
F3-03-A	1/2	58	40	21	11	---	17.5	---	1/2	M10	20	14	G30	M10 X 35	25
F3-03-B						22.2	16	11	---						
F3-06-WA	1/2	58	40	21	11	---	17.5	---	1/2	M10	20	14	G30	M10 X 35	25
F3-06-WB				22.2		16	11	---							
F3-06-A	3/4	58	40	27	11	---	23	---	3/4	M10	20	13	G30	M10 X 40	25
F3-06-B				27.2		20	12	---							
F3-08-WA	3/4	68	48	27	13.5	---	23	---	3/4	M12	25	18	G35	M12 X 45	25
F3-08-WB						27.2	20	12	---						
F3-08-A	1	68	48	27	13.5	---	29	---	1	M12	25	18	G35	M12 X 45	25
F3-08-B						34.5	25	14	---						
F3-10-WA	1	76	56	27	13.5	---	29	---	1	M12	31.5	18	G40	M12 X 45	25
F3-10-WB						34.5	25	14	---						
F3-10-A	1 1/4	76	56	27	13.5	---	31.5	---	1 1/4	M12	31.5	18	G40	M12 X 45	25
F3-10-B						43.2	31.5	16	---						
F3-12-WA	1 1/4	92	65	35	18	---	31.5	---	1 1/4	M16	37.5	25	G50	M16 X 60	25
F3-12-WB						43.2	31.5	16	---						
F3-12-A	1 1/2	92	65	35	18	---	43.5	---	1 1/2	M16	37.5	25	G50	M16 X 60	25
F3-12-B						49.1	37.5	18	---						
F3-16-WA	1 1/2	100	73	35	18	---	43.5	---	1 1/2	M16	50	25	G60	M16 X 60	25
F3-16-WB						49.1	37.5	18	---						
F3-16-A	2	100	73	35	18	---	47.5	---	2	M16	50	21	G60	M16 X 60	25
F3-16-B						61.1	47.5	20	---						
F3-20-WA	2	128	92	44	22	---	47.5	---	2	M20	60	30	G75	M20 X 75	25
F3-20-WB						61.1	47.5	20	---						
F3-20-A	2 1/2	128	92	44	22	---	70	---	2 1/2	M20	60	30	G75	M20 X 75	25
F3-20-B						77.1	60	22	---						
F3-24-WA	2 1/2	140	103	44	24	---	70	---	2 1/2	M22	75	36	G85	M22 X 80	25
F3-24-WB						77.1	60	22	---						
F3-24-A	3	140	103	49	24	---	71	---	3	M22	75	31	G85	M22 X 80	25
F3-24-B						90.0	71	25	---						

●規格修改，本公司不另行通知
 ●Specification is subjected to change without notice

STANDARD FLANGES

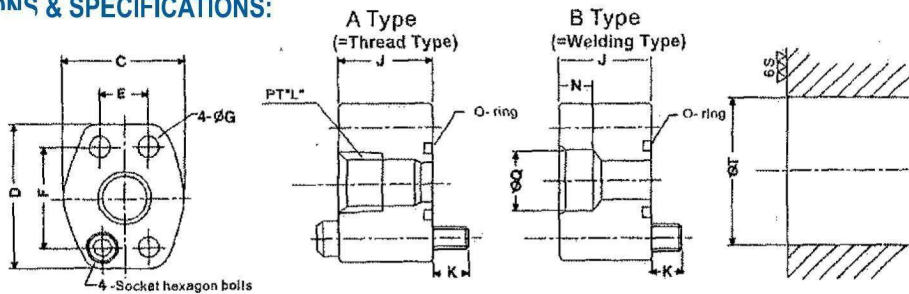
F5 SERIES FLANGES



FEATURE:

Forged steel material can resist high pressure up to 315kgf/cm²(4500psi).

DIMENSIONS & SPECIFICATIONS:



MODEL	Porisize PT	Dimensions (mm)											O-Ring	Proper bolts	Working pressure MPa
		C	D	E	F	G	J	K	L	N	Q	T			
F5-04-WA	3/8	40	54	17.5	38.1	8.8	30	10	3/8	---	---	13	P22	M8 X40	25
F5-04-WB	---								9	17.8					
F5-04-A	1/2	48	65	22.2	47.6	11	30	15	1/2	---	---	19	G30	M10 X45	25
F5-04-B	---								11	22.2					
F5-06-WA	1/2	55	70	26.2	52.4	11	30	15	1/2	---	---	26	G35	M10 X45	25
F5-06-WB	---								12	27.7					
F5-06-A	3/4	64	80	30.2	58.7	11	30	17	3/4	---	---	32	G40	M10 X50	25
F5-06-B	---								12	27.7					
F5-08-WA	3/4	72	94	35.7	69.9	13.5	30	17	1	---	---	38	G50	M12 X50	25
F5-08-WB	---								14	34.5					
F5-08-A	1	85	102	42.9	77.8	13.5	30	17	1	---	---	48	G60	M12 X50	25
F5-08-B	---								14	34.5					
F5-10-WA	1	102	114	50.8	88.9	13.5	40	17	1	---	---	63	G75	M12 X60	17.5
F5-10-WB	---								18	49.1					
F5-10-A	1 1/4	116	135	61.9	106.4	17.5	50	17	1 1/4	---	---	76	G85	M16 X70	17.5
F5-10-B	---								16	43.2					
F5-12-WA	1 1/4	134	153	69.9	120.7	17.5	50	17	1 1/2	---	---	88	G100	M16 X70	17.5
F5-12-WB	---								16	43.2					
F5-12-A	1 1/2	150	162	77.8	130.2	17.5	50	17	1 1/2	---	---	101	G115	M16 X70	17.5
F5-12-B	---								18	49.1					
F5-16-WA	1 1/2	150	162	77.8	130.2	17.5	50	17	1 1/2	---	---	101	G115	M16 X70	17.5
F5-16-WB	---								18	49.1					
F5-16-A	2	150	162	77.8	130.2	17.5	50	17	2	---	---	101	G115	M16 X70	17.5
F5-16-B	---								20	61.1					
F5-20-WA	2	150	162	77.8	130.2	17.5	50	17	2	---	---	101	G115	M16 X70	17.5
F5-20-WB	---								20	61.1					
F5-20-A	2 1/2	150	162	77.8	130.2	17.5	50	17	2 1/2	---	---	101	G115	M16 X70	17.5
F5-20-B	---								22	77.1					
F5-24-WA	2 1/2	150	162	77.8	130.2	17.5	50	17	2 1/2	---	---	101	G115	M16 X70	17.5
F5-24-WB	---								22	77.1					
F5-24-A	3	150	162	77.8	130.2	17.5	50	17	3	---	---	101	G115	M16 X70	17.5
F5-24-B	---								25	90					
F5-28-WA	3	150	162	77.8	130.2	17.5	50	17	3	---	---	101	G115	M16 X70	17.5
F5-28-WB	---								25	90					
F5-28-A	3 1/2	150	162	77.8	130.2	17.5	50	17	3 1/2	---	---	101	G115	M16 X70	17.5
F5-28-B	---								28	102.8					
F5-32-WA	3 1/2	150	162	77.8	130.2	17.5	50	17	3 1/2	---	---	101	G115	M16 X70	17.5
F5-32-WB	---								28	102.8					
F5-32-A	4	150	162	77.8	130.2	17.5	50	17	4	---	---	101	G115	M16 X70	17.5
F5-32-B	---								38	13.5	115.5				

●規格修改，本公司不另行通知
 ●Specification is subjected to change without notice