

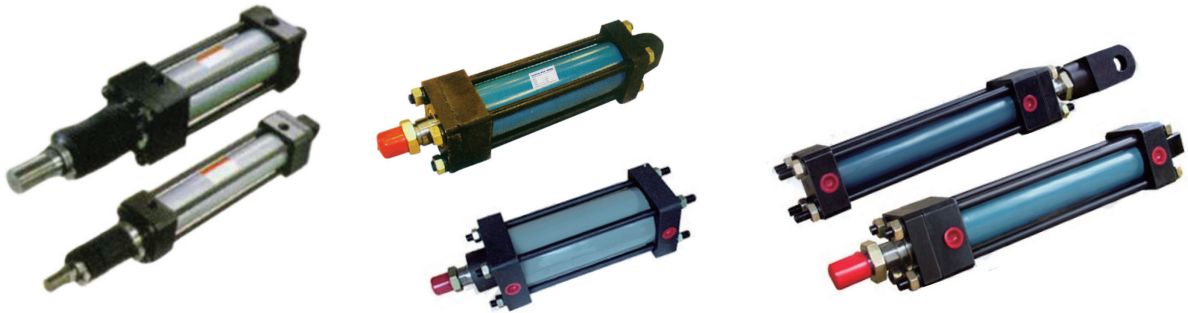


## L-3 非標準液壓缸

### Non-Standard hydraulic Cylinders

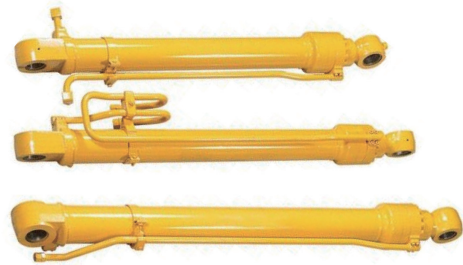
#### ● 機床行業 Machine tool industry

系列雙出桿油缸：缸徑220mm，桿徑100mm，行程11000mm，裝配總長23000mm，壓力300bar。  
This series of double rod cylinder: bore, rod diameter, stroke length of assembly, the pressure



#### ● 工程機械 Construction Machinery

系列工程缸：桿徑40~200mm，行程30~1500mm，壓力50~320bar。  
This series engineering cylinder



#### ● 冶金行業 Metallurgical industry

鋼廠推拉油缸，底座安裝，缸徑240mm，桿徑150mm，行程5250mm，壓力160bar  
Steel sliding cylinders, base installation



#### ● 停車設備 Parking facilities

升降液壓缸：前後鉸接式，缸徑100mm，桿徑60mm，行程1800mm，壓力100bar。  
Lifting hydraulic cylinder, before and after the connection type

