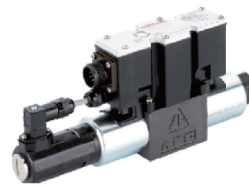




J-7 超高響應比例方向閥(帶位移控制)

Proportional Direction Valves(with feedback)

DPGEE-06/10 系列



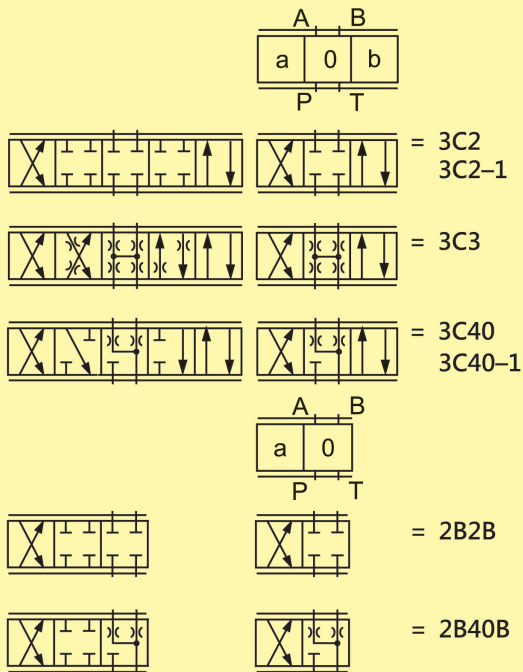
● 訂購代碼：(型號說明) HOW TO ORDER



帶集成電子元件 (OBE)
帶電氣位置回饋
With integrated electronics (OBE)

口徑代號：NS 6 = 6
口徑代號：NS 10 = 10
Nominal size

閥軸型號 Spool symbols



帶符號 3C2-1 和 3C40-1 ;
With spool symbols 3C2-1 and 3C40-1:
P → A : $q_{v最大max}$ B → T : $q_v/2$
P → B : $q_v/2$ A → T : $q_{v最大max}$

注意：
對於閥芯 3C40 和 2B40B，在中位，A 和 T 相連，B 和 T 相連，節流面積約相當於額定連接剖面的 3%。

Note:
For spools 3C40 and 2B40B there is, in the neutral position, a connection between A to T and B to T with approx. 3% of the relevant nominal cross-section.

製造年份
Manufacturing year
12: 2012
13: 2013

N = NBR 密封件 NBR seals

電子元件介面 A1 或 B1
用於 DPGEE
A1 = 控制值輸入 ±10 V
B1 = 控制值輸入 4 至 20 mA
Electronic interfaces A1 or B1
For DPGEE
A1 = Command value input ±10 V
B1 = Command value input 4 to 20 mA

電氣連接
用於 DPGEE：
無代碼=不帶符合 DIN 的元件插頭式 DF31
DF31= 帶插頭式連接器 - 單獨定購
Electrical connections
for DPGEE:
No code = without DIN type DF31
DF31 = plug-in connector - separate order

D24= 電源電壓 PowerSupply voltage 24 VDC

閥壓差 $\Delta p = 10$ bar 時的額定流量
Nominal flow at a valve pressure differential $\Delta p = 10$ bar

口徑代號 NS 6 Nominal size NS 6	口徑代號 NS 10 Nominal size NS 10
08 = 8 l/min	25 = 25 l/min
16 = 16 l/min	50 = 50 l/min
32 = 32 l/min	75 = 75 l/min

Symbols 油壓記號

Proportional directional valves without integrated electronics Type DPGEE-2B2B; DPGEE-2B40B
Type DPGEE-3C2; DPGEE-3C40

