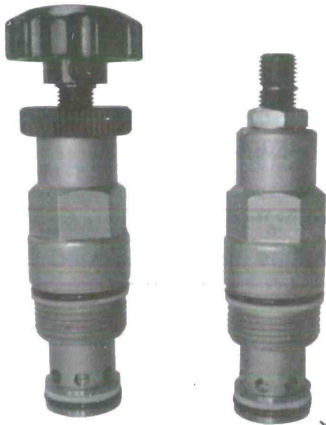
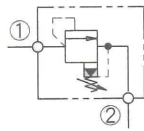


螺紋式插裝溢流閥-引導、平衡滑柱

Screw-in relief cartridge valve-Pilot operated、Balanced spool type



油壓符號 Symbol



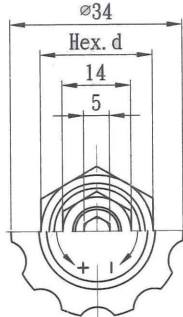
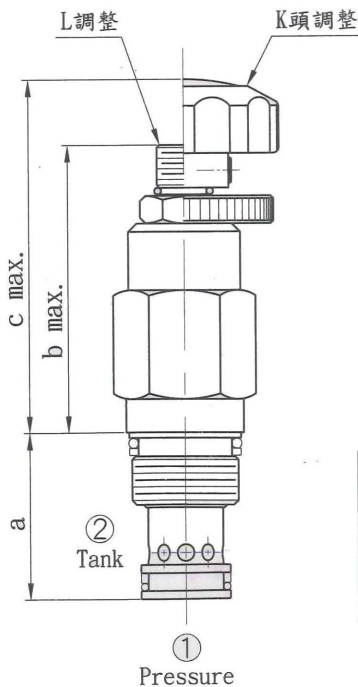
■ 特性/Characteristic:

- 快速反應，響應時間2ms，低洩漏量（小于5滴/分鐘）
- 壓力調整不穩定且不是設計為連續負荷使用
- Fast acting 2ms response time Low leakage(less than 5 drops/min) at reset
- These cartridges exhibit very rapid response, but pressure regulation can be unstable and the valves are not designed for continuous duty applications

■ 性能表/Specification:

型號 Model	閥系說明 Description	額定流量 Rated Flow	最高壓力 Max. pressure	重量 Weight
CRV-062	平衡滑柱 引導型 Pilot operated	請參閱 壓損曲綫表	315bar	062:K: 0.18Kg L: 0.14Kg 092:K: 0.22Kg L: 0.19Kg 102:K: 0.21Kg L: 0.16Kg

■ 尺寸圖/Dimensions (mm)



閥型	062	092	102
a	30	34	32
b	63	60	58
c	70	68	70
d	22	22	26

■ 壓損曲綫/Flow-Pres. Drop Curve

