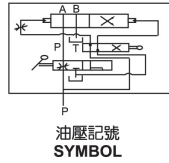




F-5 平面磨床開關閥

Surface Grinder Valves
SGV



選購指南 HOW TO ORDER

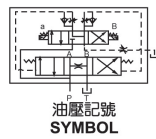
| SGV | 03-20 |
|------------------------------|--|
| 系列號碼 SERIES NUMBER SGV | 稱呼口徑 VALVE SIZE 03-20 06-63 03-25 06-75 04-25 08-100 08-125 |

性能表 SPECIFICATION

| 型號 MODEL | 額定流量 l/min RATED FLOW | 最高使用壓力 MAX. OPERATING PRESSURE kgf/cm ² | 稱呼口徑 VALVE SIZE PT | 推薦機種(臺面尺寸) RECOMMENDED MACHINE TYPE TABLE SIZE(mm) |
|-------------|--------------------------|--|--------------------------|--|
| SGV03-20 | 20 | 40 | 3/8" | 250X250 |
| SGV03-25 | 30 | | 3/8" | 300X600 |
| SGV04-25 | 40 | | 1/2" | 400X800 |
| SGV06-63 | 80 | | 3/4" | 500X1000 |
| SGV06-75 | 80 | | 3/4" | 600X1200 |
| SGV08-100 | 140 | | 1" | |
| SGV08-125 | 140 | | 1" | |

F-6 平面磨床電動開關閥

Surface Grinder Solenoid Valves
SGS



選購指南 HOW TO ORDER

| SGS | -04 | -A2 |
|------------------------------|------------------------------|--|
| 系列型號 SERIES NUMBER SGS | 通徑 VALVE SIZE 04 06 | 搭配電磁規格 SUITABLE SOLENOID VALVE: 02-3C4 詳見電磁閥性能表 REFER SPOOL FUCTION A1 A2 D1 D2 |

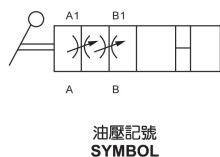
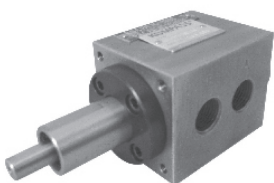
性能表 SPECIFICATION

| 型號 MODEL | 額定流量 l/min RATED FLOW | 最高使用壓力 MAX. OPERATING PRESSURE kgf/cm ² | 稱呼口徑 VALVE SIZE PT | 推薦機種(臺面尺寸) RECOMMENDED MACHINE TYPE TABLE SIZE(mm) |
|-------------|--------------------------|--|--------------------------|--|
| SGS-04 | 30 | 40 | 1/2" | 300 x 600 |
| SGS-06 | 45 | 40 | 3/4" | 500 x 1000 |

※注：本系列必須與電磁閥配合使用，但訂購時，祇計本體，電磁閥價格另計。
Remark: The series valves must be used together with solenoid valves, the price we offer is body only, the solenoid valves with another price.

F-7 雙位式流量控制閥

Flow Control Valves
TV-AB-04/TV-AB-06



性能表 SPECIFICATION

| 型號 MODEL | 最大流量 l/min MAX. FLOW | 最大壓力MPa MAX. PRESSURE | 口徑 THREAD CONNECTION |
|-------------|-------------------------|--------------------------|-------------------------|
| TV-AB-04 | 30 | 4 | PT 1/2" |
| TV-AB-06 | 40 | | PT 3/4" |