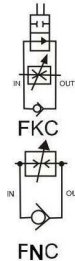
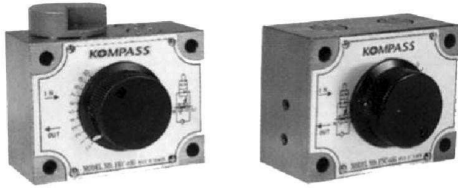


## FLOW CONTROL VALVES (PRESSURE COMPENSATED)

### FKC、FNC SERIES



#### FEATURE:

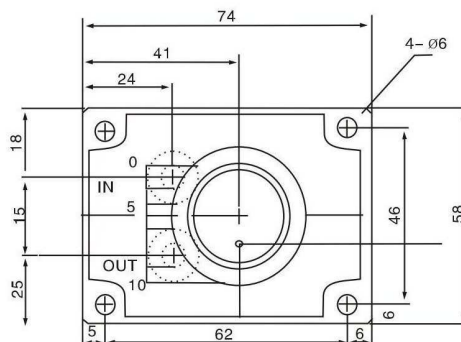
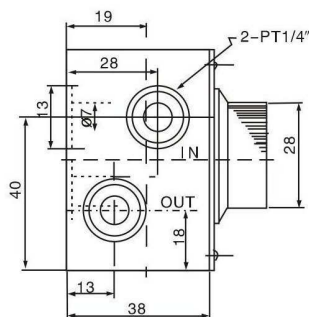
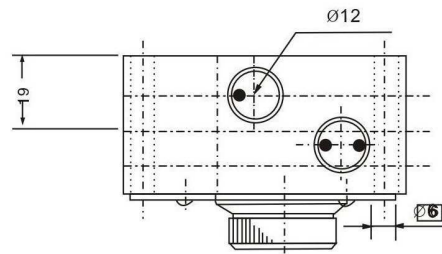
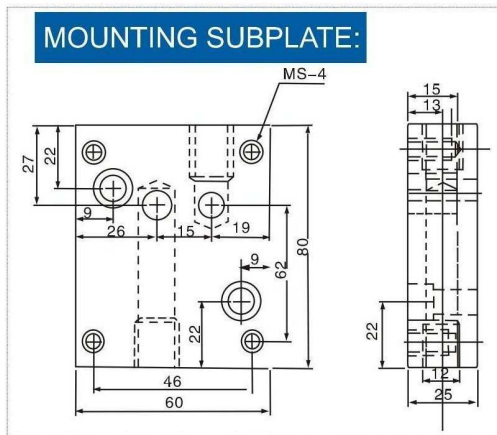
1. Flow is not fluctuated by pressure difference between inlet and outlet, and speed can be accurately controlled, because of internal pressure compensating device equipped.
2. These valves are combined with non-return check valves to form throttle with reverse free flow and without restrictions, Nameplates marked scales, are easy to understand and adjust flow accurately.
3. They are suitable for machines requiring high-low or low-high speed switches, especially for machine tools.

#### CARE FOR APPLICATIONS:

1. Scales on nameplate are divided into 10 spaces. Same flow rates can be obtained on adjusting every space.
2. FKC, FNC and FSC types combine with check valves, are applied to A,B port's flow controls, and FS type are applied to T or P port's flow controls.
3. Rotor of FKC type can be connected to machines, For detail connection methods, please consult us.

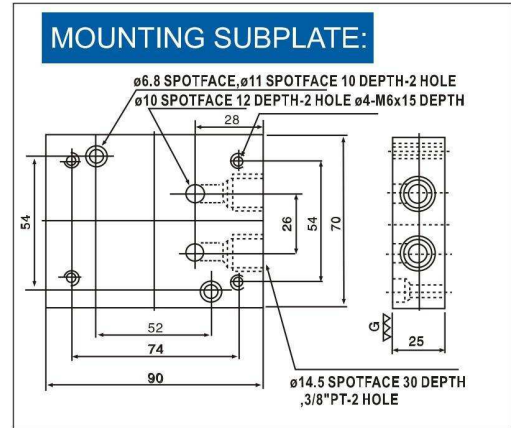
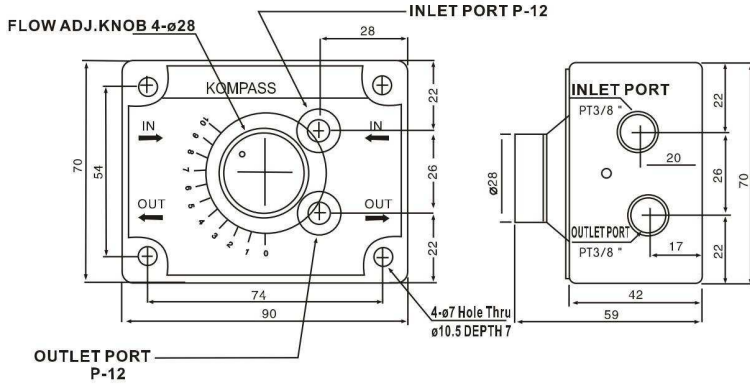
### Dimensions

#### FNC-G02



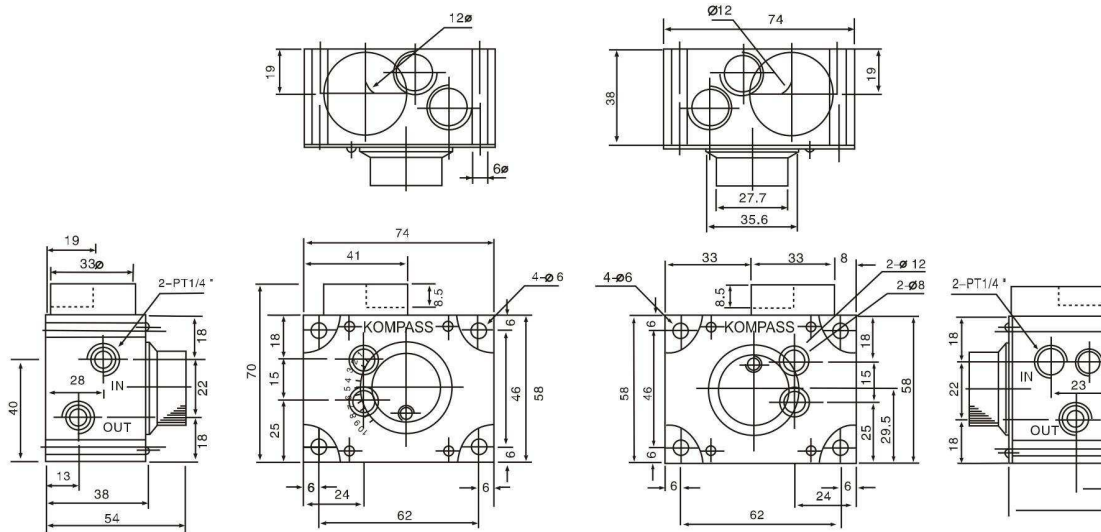
**Dimensions**

**FNC-G03**

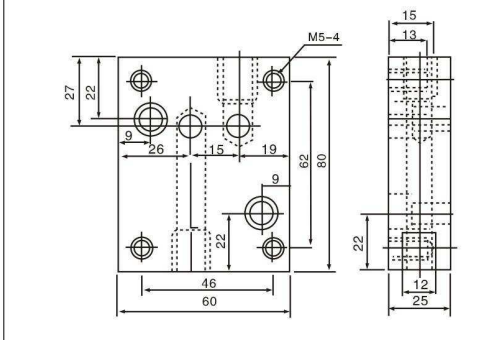


**FKC-G02※A (STANDARD)**

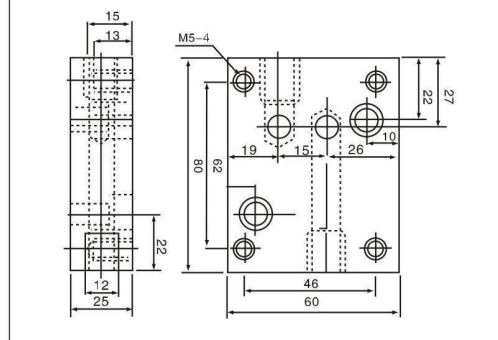
**FKC-G02※B**



**MOUNTING SUBPLATE:**

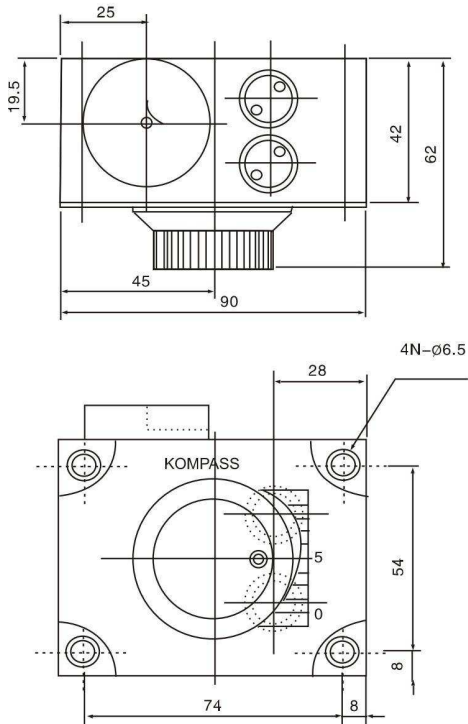


**MOUNTING SUBPLATE:**

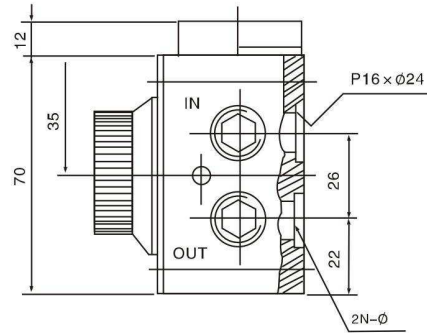
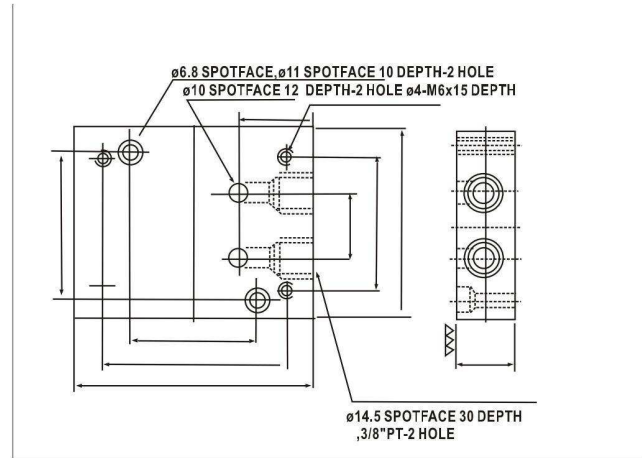


## Dimensions

### FKC-G03※A(STANDARD)

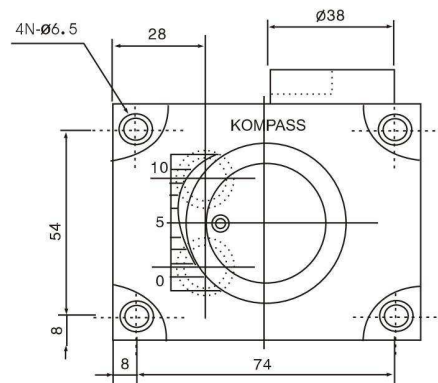
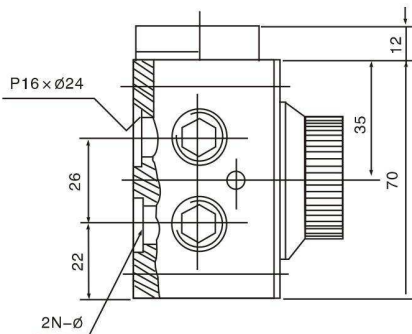
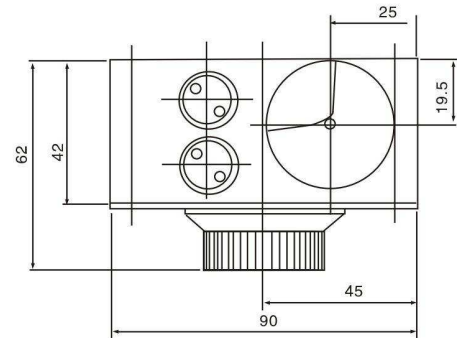
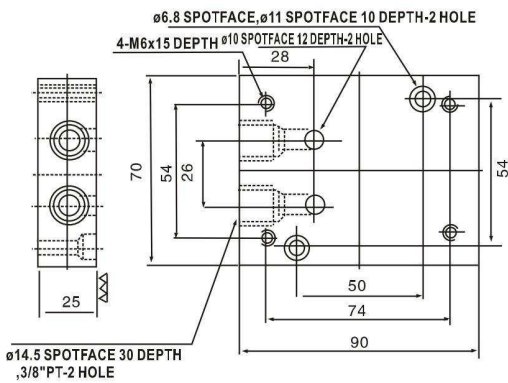


### MOUNTING SUBPLATE:



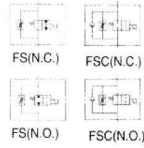
### FKC-G03※B

### MOUNTING SUBPLATE:



### SOLENOID OPERATED FLOW CONTROL VALVES (PRESSURE COMPENSATED)

#### FS、FSC SERIES



#### CARES FOR APPLICATIONS:

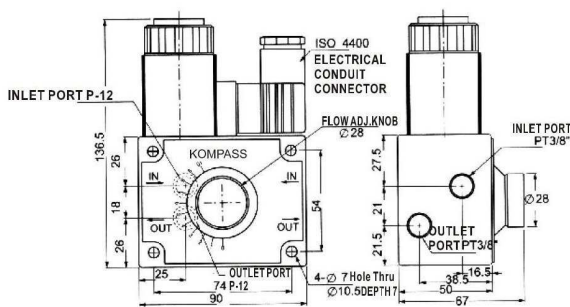
- 1.Scales on nameplate are divided into 10 spaces. Same flow rates can be obtained on adjusting every space.
- 2.Solenoid type can be adjusted for once.

#### FEATURE:

- 1.Flow is not fluctuated by pressure difference between inlet and outlet. And speed can be accurately controlled, because of internal pressure compensating device equipped.
- 2.These valves are combined with non-return check valves to form throttle with reverse free flow and without restrictions. Nameplate marked scales, are easy to understand and adjust flow accurately.
- 3.They are suitable for machines requiring high-low of low high speed switches, especially for machine tools.

#### Dimensions

#### FS(C)-G03-※



#### MOUNTING SUBPLATE:

