

## THROTTLE WITH CHECK VALVES TVH, TVL, TVC SERIES

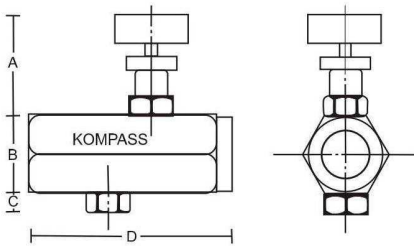


### FEATURE:

1. Forged steel body's max. Pressure can reach 25-30 Mpa, copper body 7 Mpa.
2. 100% tested of leakage-free and pressure resistant tests.
3. Precise internal processes result in accurate throttle control.

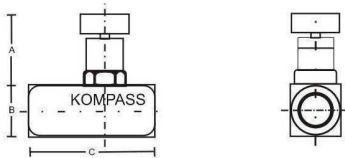
### Dimensions

#### TVC



MODEL NO.	PORT SIZE	A	B	C	D
TVC-02	1/4"	37	23	7	62
TVC-03	3/8"	40	26		70
TVC-04	1/2"	42	32	10	81
TVC-06	3/4"	46	41	12	92

#### TVH



MODEL NO.	PORT SIZE	A	B	C
TVL-03	3/8"	44	26	65
TVH-03	3/8"	44	26	65
TVH-04	1/2"	44	38	100

#### TVL

